

TU58 CONFIGURATION GUIDE

1. Baud Rate Selection

To configure baud rate, wire wrap the appropriate pairs.

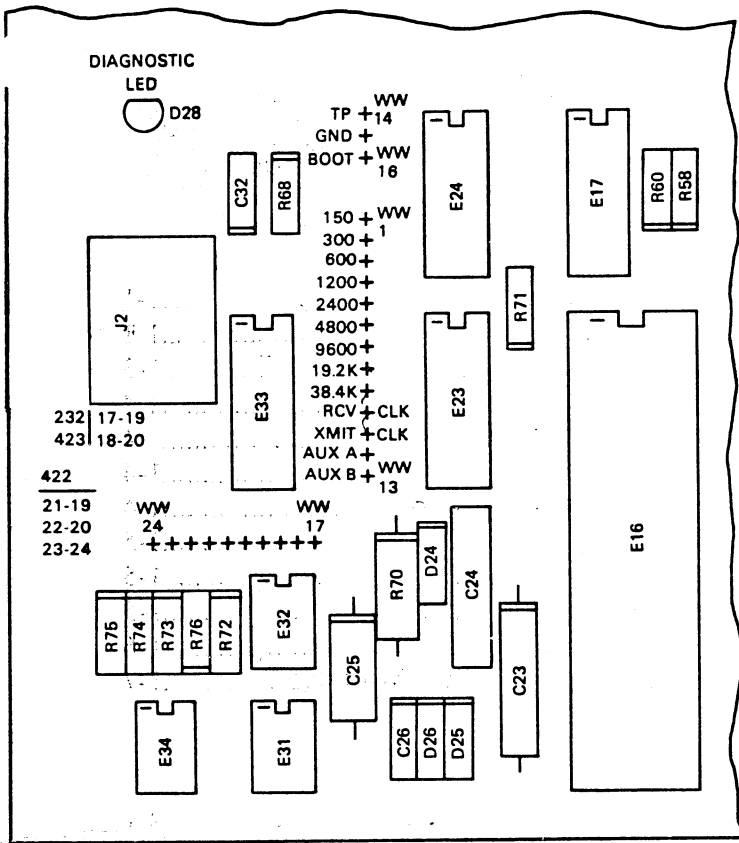
Baud Rate	Wire Wrap Pin Pairs	
	Receive	Transmit
150	WW1, WW10	WW1, WW11
300	WW2, WW10	WW2, WW11
600	WW3, WW10	WW3, WW11
1200	WW4, WW10	WW4, WW11
2400	WW5, WW10	WW5, WW11
4800	WW6, WW10	WW6, WW11
9600	WW7, WW10	WW7, WW11
19200	WW8, WW10	WW8, WW11
38400	WW9, WW10*	WW9, WW11*

*factory configured

2. Comm. Lines Parameters

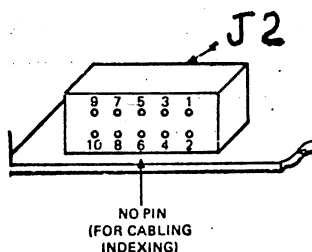
	Comm. Lines	
	RS-422	*RS-423 & RS-232C
wire wrap pairs	WW19, WW21 WW20, WW22 WW23, WW24	WW17, WW19 WW18, WW20

*factory configured



3. Serial Interface Connector (J2)

Pin	RS-422	RS-423, RS-232C
J2-1	Auxiliary A	Auxiliary A
J2-2	Ground	Ground
J2-3	Transmit +	Transmit 2
J2-4	Transmit -	Ground
J2-5	Ground	Ground 7
J2-6	Key (no pin)	Key (no pin)
J2-7	Receive -	Ground
J2-8	Receive +	Receive 3
J2-9	Ground	Ground
J2-10	Auxiliary B	Auxiliary B



4. Cable to Cartridge Drive (J3), (J4)

J3,4-1	Cartridge L
J3,4-2	No connection
J3,4-3	Permit L
J3,4-4	Signal ground
J3,4-5	Motor +
J3,4-6	Motor -
J3,4-7	+12V
J3,4-8	Tachometer
J3,4-9	Led
J3,4-10	Head shield ground
J3,4-11	Erase return
J3,4-12	Erase 1
J3,4-13	Erase 0
J3,4-14	Head return
J3,4-15	Head 0
J3,4-16	Head 1

*pin 3 up board in sender
pin 8 up board in receiver*

*4-5-8
6-20*



5. Power Connector (J1)

(See fig. 2 for connector pinout.)

J1-1 +12V
 J1-3 Ground
 J1-5 +5
 J1-6 Ground

7. Misc.

*WW12 Auxiliary A (to J2-1)
 *WW13 Auxiliary B (to J2-10)
 *WW14 Factory test point
 *WW15 Ground } connect together for
 *WW16 Boot } auto-boot on power-up

* Not connected-factory configuration

6. Power Consumption -- for module with 2 drives

11 W Typical, drives running

+5VI5% @ .75A max

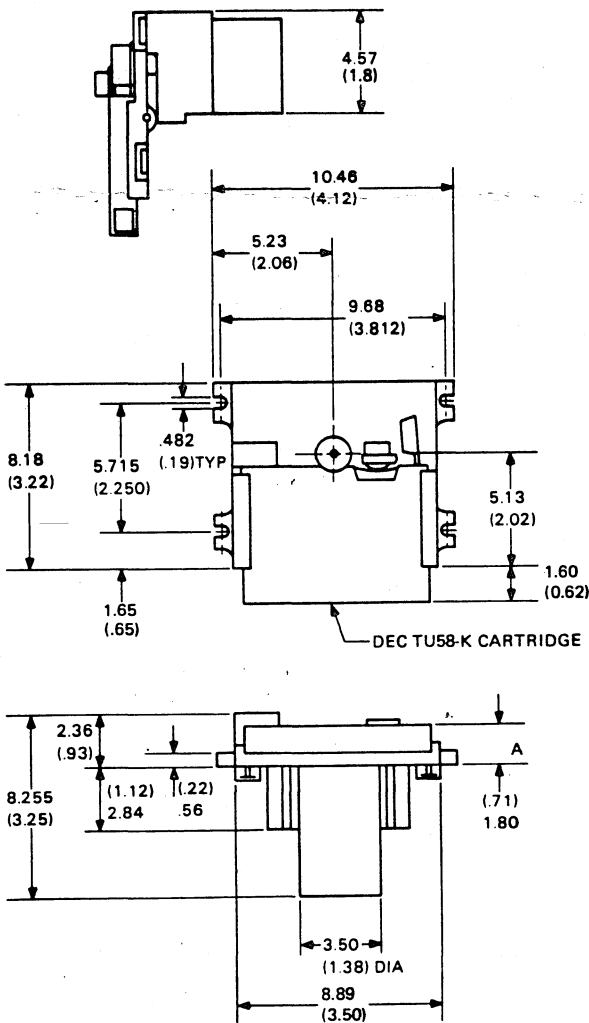
+12V + 10%, -5% @ 1.0A Peak
 .6A ave running
 .1A idle

8. Cables

BC20N-05 - null modem cable
 (2X5 pin AMP female to RS-232C female)

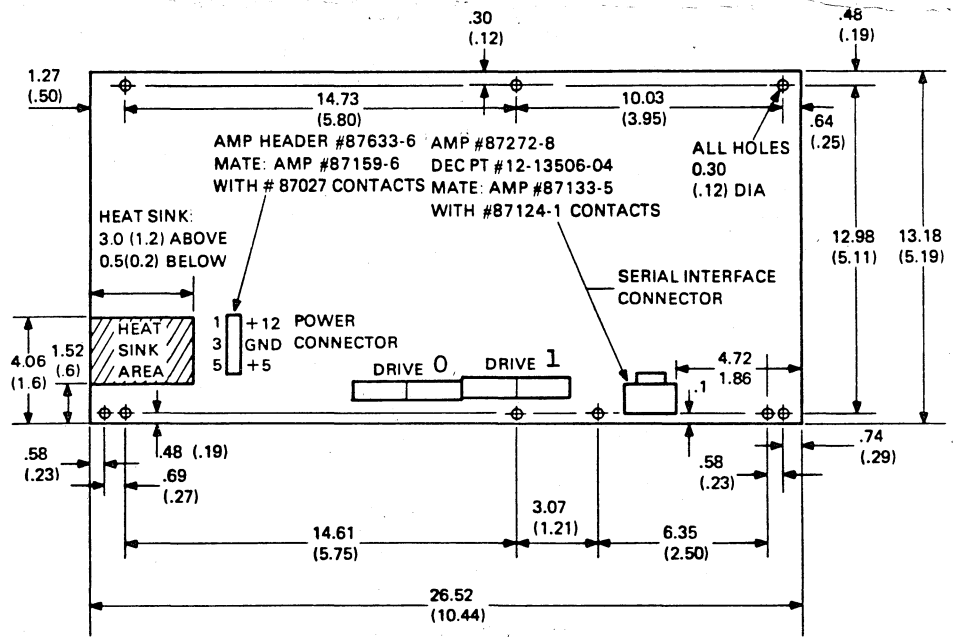
BC21B-05 - modem cable
 (2X5 pin AMP female to RS-232C male)

BC20M-50 - EIA RS-422 or RS-423 cable
 (2X5 pin AMP female to 2X5 pin AMP female)



Mounting Dimensions for Cartridge Drive

Fig. 1



Mounting Dimensions for Controller Module

Fig. 2